

Link arc

INstreet

Instreet Investment Limited

Level 34, 50 Bridge Street
Sydney, NSW 2000

PO BOX R380
Royal Exchange, NSW 1225

E info@instreet.com.au

T 1300 954 678

W instreet.com.au

Absolute Returns from Commodities Deferred Purchase Agreement

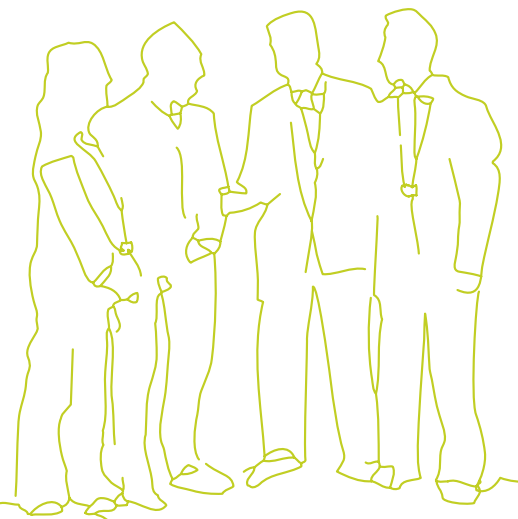
Make a strategic investment to access **Absolute Returns** from **Commodities** in many market conditions.

Instreet Link Absolute Returns from Commodities (ARC) offers an investment solution for many market conditions. Through specialised research and development, Instreet has identified an index that has the potential to perform in bull, bear and sideways markets. For a relatively small one off up-front payment, investors have access to absolute returns from commodities, with known downside risk.

ARC is an investment in a Deferred Purchase Agreement (DPA).

Benefits and Features

- Potential to access Absolute Returns from Commodities in most market conditions
- Average Annual Performance 14.6%p.a. (Since Oct 97)*
- One off upfront payment which is a fraction of the size of the Notional Exposure of the investment.
- Annual payment of gains:
 - Coupon payment end of year 1.
 - DPA payment end of year 2.
- The maximum loss is the one off upfront payment.



*Please see Important Notice section.

Link arc

Absolute Returns from Commodities Deferred Purchase Agreement

The Absolute Return Commodities Index

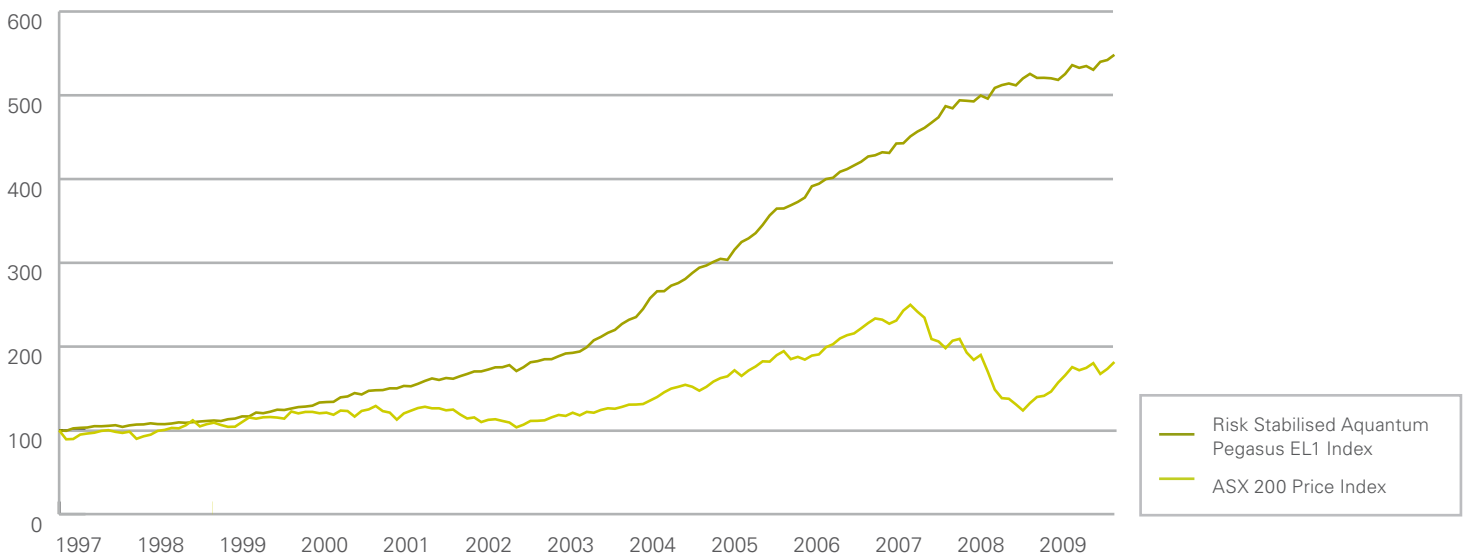
The Absolute Return Commodities Index is the Risk Stabilised Aquantum Pegasus EL1 Strategy Index. This is a commodity market-neutral index linked to the performance of a quantitative exchange traded commodities strategy. Utilising mathematical and statistical techniques, Aquantum has developed an innovative set of rules that aims to generate consistent positive returns with low volatility, in a range of market conditions.

An investment in the Instreet ARC DPA may suit you if you:

- Seek exposure to absolute returns for a cost which is a fraction of your notional exposure (eg, \$11,800 for \$100,000 exposure for 2 years).
- Intend to buy and hold for a term of 2 years.
- Want an investment with a defined outcome on the downside, where losses are limited to your initial investment.
- Are attracted by the annual payments of any gains.
- Seek an investment which can be used to diversify their investment portfolio with exposure to an asset class that can perform in many market conditions.
- Seek an investment which is suitable for self managed superannuation funds, companies, trusts or individuals.

Performance Chart

ASX 200 Price Index comparison with Risk Stabilised Aquantum Pegasus EL1 Index from October 1997 to March 2010.



This history has been provided to enable Investors to view the simulated returns for the date specified in the chart.

Investors should note that simulated performance is not a reliable indicator of future performance. Please see Important Notice for more information.

Instreet Investment Limited

Level 34, 50 Bridge Street
Sydney, NSW 2000

PO BOX R380
Royal Exchange, NSW 1225

E info@instreet.com.au

T 1300 954 678

W instreet.com.au

Example of how Instreet Link ARC may work

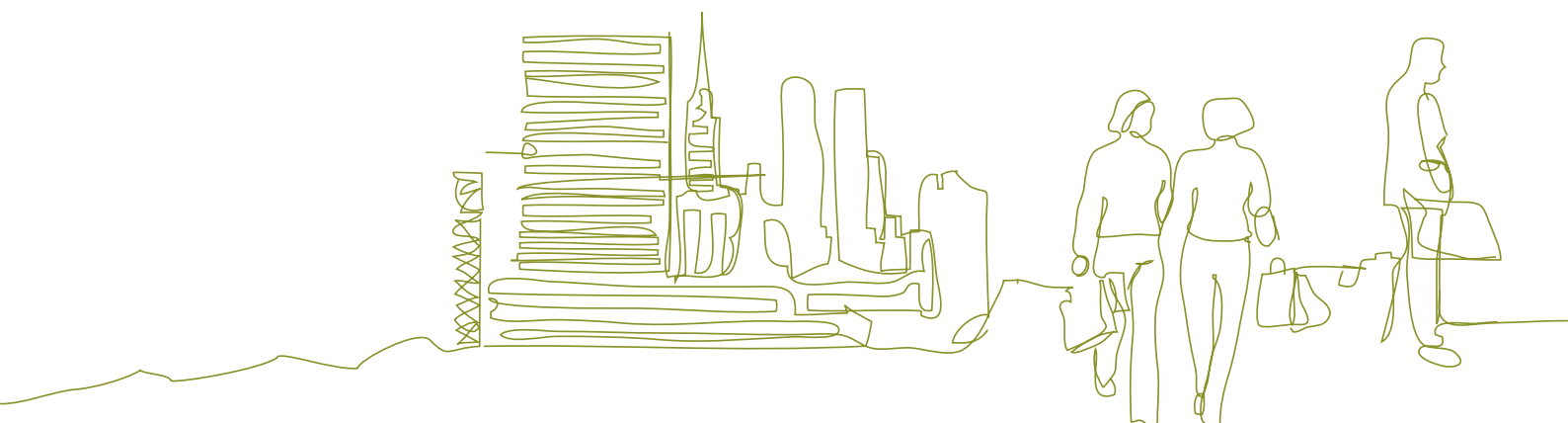
The tables below are examples only that are provided to illustrate how the investment strategy may perform in different market conditions. They are based on an investor initial investment of \$11,800.

Year	Index Example 1	Payment on Notional	Return on Initial Investment
0	500		
1	575	\$15,000	27%
2	661	\$15,000	127%

Year	Index Example 2	Payment on Notional	Return on Initial Investment
0	500		
1	375	\$0	0%
2	450	\$20,000	69%

Year	Index Example 3	Payment on Notional	Return on Initial Investment
0	500		
1	375	\$0	0%
2	350	\$0	-100%

Year	Index Example 4	Payment on Notional	Return on Initial Investment
0	500		
1	600	\$20,000	69%
2	575	\$0	0%



Instreet Investment Limited

Level 34, 50 Bridge Street
Sydney, NSW 2000

PO BOX R380
Royal Exchange, NSW 1225

E info@instreet.com.au

T 1300 954 678

W instreet.com.au

How to apply

Before investing in the Instreet Link ARC DPA, it is important that investors read and understand the terms and investment risks set out in the Product Disclosure Statement (PDS). Please contact Instreet to obtain a copy of the PDS on **1300 954 678**, or download from Instreet's website www.instreet.com.au.

If, after you have read the PDS, you decide to apply for Units, please complete and return the Application Form attached to the PDS. Payments can be made by EFT, cheque or you can elect to direct debit your account.

Completed application forms can be sent to:

Instreet Investment Limited

PO BOX R380

Royal Exchange, NSW 1225

Important Notice

Presentation: This document has been prepared by Instreet Investment Limited ACN 128 813 016 (**Instreet**), an Authorised Representative of EA Financial, LP ACN 971 745 471, AFSL 246801, and is current as at 22 April 2010. Instreet is the distribution manager for the Instreet Link ARC Deferred Purchase Agreements (Instreet LINK ARC DPA).

Issuer and PDS: Although RBS Group (Australia) Pty Ltd ABN 78 000 862 797, AFSL 247013 (Issuer) has consented to the inclusion of its name in this document, this document is not prepared or issued by the Issuer or any of its affiliates. Neither the Issuer nor any of its affiliates makes any representation or warranty, express or implied, regarding the investment performance of the Instreet Link ARC DPA, the suitability of the Instreet Link ARC DPA for any investor, or the accuracy, completeness or adequacy of information in this document. Neither the Issuer nor any of its affiliates accepts any liability in connection with these matters.

In respect of each item of Marketing Information which includes Issuer's Intellectual Property:

The logo is a service mark of RBS Group (Australia) Pty Ltd and/or its affiliates and are used by the Instreet Investment Limited under licence."

The issue is structured by Link Capital Investments Pty Ltd ACN 138 072 429, AFSL 246801 (**Link Capital**) has consented to the inclusion of its name in this document. Neither Link Capital nor any of its affiliates makes any representation or warranty, express or implied, regarding the investment performance of the Instreet Link ARC DPA, the suitability of the Instreet Link ARC DPA for any investor, or the accuracy, completeness or adequacy of information in this document. Neither Link Capital nor any of its affiliates accepts any liability in connection with these matters. The Instreet LINK ARC DPA is offered in a product disclosure statement dated on or around the 29th April 2010 (**PDS**). The PDS will be available from Level 34, 50 Bridge Street, Sydney, at the website www.instreet.com.au or by phoning 1300 954 678. In deciding whether to acquire or continue to hold an investment investors should obtain the PDS and consider its contents.

The information in this document has not been prepared or reviewed by the Issuer, Link Capital or any of their respective affiliates. None of the Issuer, Link Capital or any of their respective affiliates makes any statement in this presentation, nor do they make any representation or warranty, or accept any responsibility or liability, to any party in relation to any whole or part of such information.

General advice warning: The information contained in this document is general information only and has been prepared for distribution to financial advisers. It has been prepared without taking account any potential investors' financial situation, objectives or needs and the appropriateness of this information needs to be considered in that context. Advisers must form their own views on whether the Instreet LINK ARC DPA is appropriate after considering their clients' objectives, financial situation and needs. We recommend you seek your own legal and taxation advice.

This presentation may not be passed on to retail clients unless it forms part of the adviser's advice to the client. Any statements contained here are general only and do not take into account your needs, objectives, financial circumstances, or investment preferences and are not intended to constitute advice.

No responsibility or liability is accepted by Instreet or any third party who has contributed to this document for any of the information contained herein or for any action taken by you or any of your officers, employees, agents or associates.

Past performance: Past performance is not a reliable indicator of future performance.

Performance: The returns are based on the increase on the Risk Stabilised Aquantum Pegasus EL1 Strategy Index over the specified month. The simulated performance uses the historical values of the Risk Stabilised Aquantum Pegasus EL1 Strategy Index (USD) as published by Bloomberg. Investors should note that in calculating the simulated returns, they have been calculated based on back-testing using historical data of the Underlying Index from the period of 6 October 1997 until 31 December 2009. All fees, costs and charges of the Underlying Index have been taken into account when calculating the simulated returns. In addition, the simulation assumes that the Reference Index was not terminated by the Reference Index Calculation Agent and where there was a Market Disruption Event or other event which prevented the publishing of a Reference Index Value, the Issuer has used a level on the following Business Day.