



Instreet Link DS Series I and II

INstreet

Instreet Investment Limited

Level 34, 50 Bridge Street
Sydney, NSW 2000

PO BOX R380
Royal Exchange, NSW 1225

E info@instreet.com.au

T 1300 954 678

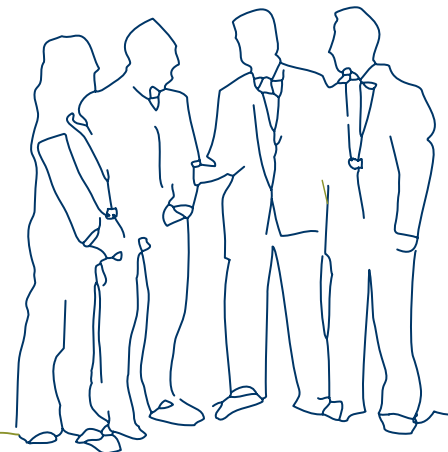
W instreet.com.au

Manage your portfolio to protect against falling markets.

We all know that markets go down as well as up. Instreet Link DS provides you with a useful tool for managing downside risk in your portfolio by offering you the potential to earn returns from a decline in the value of the Australian equity market.

An investment in Instreet Link DS may suit you if you are:

- Looking for a short-term risk management tool for your investment portfolio.
- Looking to manage downside risk in your investment portfolio without altering your asset allocation.
- Of the view that the Australian equity market may fall and are seeking to benefit from this decline.
- Intending to buy and hold the investment for a maximum term of 1 year.
- Seeking an investment which is suitable for self managed superannuation funds, companies, trusts or individuals.





Instreet Link DS Series I and II

Benefits and features

Instreet Link DS seeks to provide you with the following potential benefits and features:

A portfolio management tool

Markets go down as well as up. Instreet Link DS provides you with a useful tool for managing downside risk in your portfolio, as you have the potential to earn returns in down markets.

Manage risk without changing your portfolio allocation

Many investors choose to reduce their overall market allocation in the expectation of market downturns. This can result in investors missing out on return opportunities when the market rebounds. Protecting a portion of your portfolio using Instreet Link DS can allow you to manage the risk of market downturns without allocating your portfolio to cash.

One off up front payment

Instreet Link DS provides exposure to falls in the Australian stock market for an Issue Price which is a fraction of the size of the Notional Exposure of the investment. In addition to this, an investor's potential financial loss is limited to their initial investment amount only.

Simple to access

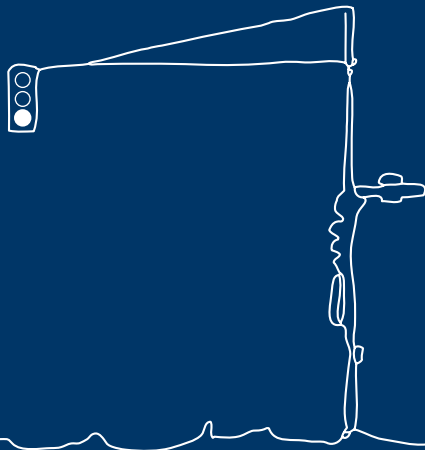
Investing in Instreet Link DS is quick and easy. Investors simply need to complete the Application Form attached to the Product Disclosure Statement (PDS). The investment is suitable for self managed superannuation funds, companies, trusts or individuals. The minimum investment is 2,500 Units.

Key terms

Instreet Link DS is an investment in a Deferred Purchase Agreement (Units). The performance of Instreet Link DS is linked to the decline in value of the Australian stock market as measured by the S&P/ASX 200 Price Return Index (S&P/ASX 200 Index). The Units offer Investors the potential to benefit from a fall in the value of the S&P/ASX 200 Index below a certain level (the Strike Level) and provided the market does not rise above a certain level (the Barrier Level).

Reference index	Term	Strike Level	Indicative Barrier Level ¹	Unit price
S&P ASX 200 Index	Approximately 1 year	95%	115%	\$0.86
S&P ASX 200 Index	Approximately 1 year	100%	115%	\$1.06

¹ The Barrier Level will be set on the Commencement Date. The Barrier Level is expressed as a percentage of the Reference Index at the Commencement Date (subject to averaging across the three Issuance Observation Dates).



Instreet Investment Limited

Level 34, 50 Bridge Street
Sydney, NSW 2000

PO BOX R380
Royal Exchange, NSW 1225

E info@instreet.com.au

T 1300 954 678

W instreet.com.au

How the investment works - case study

John is looking to protect his Australian share portfolio through various market conditions. After speaking to his financial adviser and reading the PDS, John has decided to invest in Instreet Link DS.

John invests in 10,000 Units in Series 1 to obtain a notional exposure to the S&P/ASX 200 Index of \$100,000. To obtain this notional exposure of \$100,000, John pays one up front payment of \$8,600. This will provide John with the potential to benefit from any decline in the Australian share market and may put him in a better position to benefit from any subsequent rebound.² John remains in the investment until the Maturity Date.

John's potential return is based on the Reference Level at the Commencement Date, the Reference Level at the Maturity Date, the Strike Level and the Barrier Level. John is investing in Series 1, which has an indicative Barrier Level of 115% and a Strike Level of 95%.

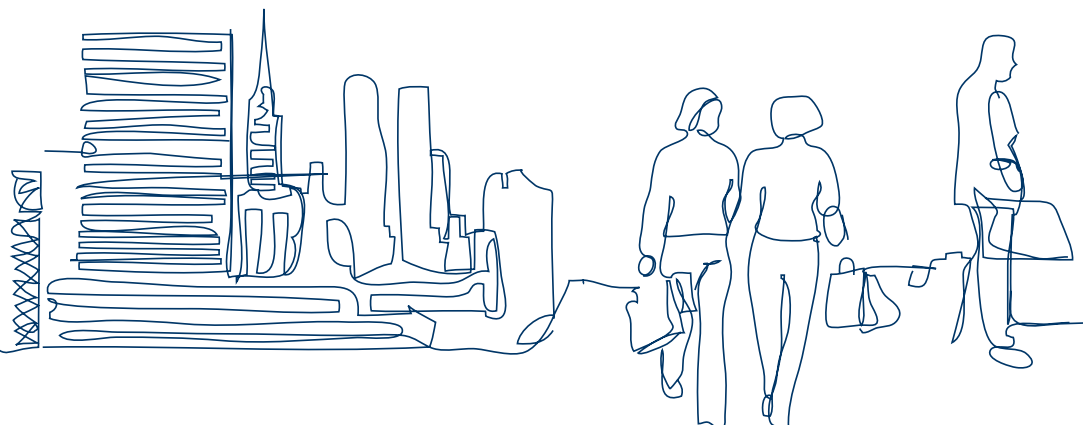
In this example, over the term of the investment the S&P/ASX 200 Index falls as shown below:

Reference Index at Commencement Date	4,800
Reference Index at Maturity Date	3,840 ³
Reference Index Return	-20% (3,840 / 4,800)

The Final Value of each Unit is equal to the Notional Exposure per Unit x (Strike Level – Reference Index Return).

Notional Exposure per Unit	\$10
Strike Level	95%
Reference Index Return	80% (100%-20%)
Final Value per Unit	\$1.50 (10 x (95%-80%))
Final Value at Maturity	\$15,000 (\$1.50 x 10,000 Units)

This example demonstrates how John can receive a positive return from a fall in the Australian share market, helping him achieve his goal of managing risk within his portfolio.



²This assumes that John's Australian share portfolio remains fully invested.

³This assumes that the Barrier Level is never reached or exceeded.

Instreet Investment Limited

Level 34, 50 Bridge Street
Sydney, NSW 2000

PO BOX R380
Royal Exchange, NSW 1225

E info@instreet.com.au

T 1300 954 678

W instreet.com.au

How to apply

Before investing in Instreet Link DS, it is important that investors read and understand the terms and investment risks set out in the Product Disclosure Statement (PDS). Please contact Instreet to obtain a copy of the PDS on **1300 954 678** or download from Instreet's website www.instreet.com.au.

If, after you have read the PDS, you decide to apply for Units, please complete and return the Application Form attached to the PDS. Payments can be made by cheque or you can elect to direct debit your account.

Completed application forms can be sent to:**Instreet Investment Limited**

PO BOX R380
Royal Exchange, NSW 1225

INquire

Contact Instreet

E info@instreet.com.au

T 1300 954 678

Important information

Document: This Document has been prepared by Instreet Investment Limited ACN 128 813 016 (Instreet), an Authorised Representative of EA Financial, LP ACN 971 745 471, AFSL 246801, and is current as at 27 March 2010. Instreet is the Arranger for the Instreet Link DS Series I and II Linked Deferred Purchase Agreements (Instreet Link DS Series I and II).

Issuer and PDS: Instreet Link DS Series I and II will be offered in a product disclosure statement to be dated on or around 22 April 2010 (PDS). It will be made available when the product is released or otherwise becomes available, which is expected to be on or around 22 April 2010. The PDS will be available from Level 34, 50 Bridge Street, Sydney, at the website www.instreet.com.au or by phoning 1300 954 678. In deciding whether to acquire or continue to hold an investment, investors must obtain the PDS and carefully consider its contents.

General advice warning: The information contained in this Document is general information only. It has been prepared without taking account any potential investors' financial situation, objectives or needs and the appropriateness of this information needs to be considered in that context. Advisers must form their own views on whether Instreet Link DS Series I and II is appropriate after considering their clients' objectives, financial situation and needs. We recommend you seek your own legal and taxation advice.

The information may be based on assumptions or market conditions and may change without notice. This may impact the accuracy of the information. In no circumstances is the information in this Document to be used by, or presented to, a person for the purposes of making a decision about a financial product or class of products.

The case study is a hypothetical example only and is not a forecast. Due care and attention has been used in the preparation of hypothetical examples. However, actual results may and will vary and any variation may be materially positive or negative.

No responsibility or liability is accepted by Instreet or any third party who has contributed to this Document for any of the information contained herein or for any action taken by you or any of your officers, employees, agents or associates.

Past performance: Past performance is not a reliable indicator of future performance.
