



**IN**street

**Instreet Investment Limited**

Level 34, 50 Bridge Street  
Sydney, NSW 2000

PO BOX R380  
Royal Exchange, NSW 1225

**E** [info@instreet.com.au](mailto:info@instreet.com.au)

**T** 1300 954 678

**W** [instreet.com.au](http://instreet.com.au)

**Absolute Returns from Commodities Deferred Purchase Agreement**

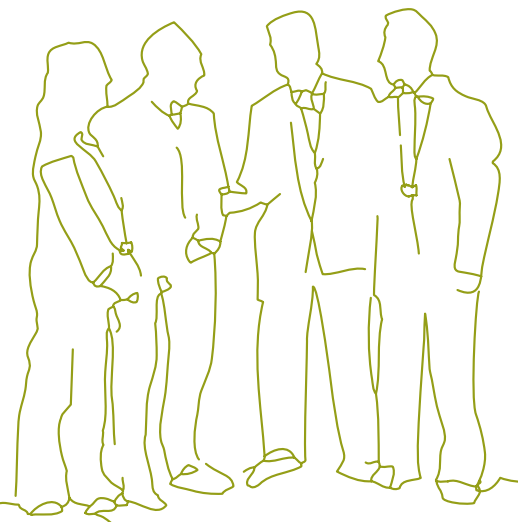
# Make a strategic investment to access **Absolute Returns** from **Commodities** in many market conditions.

*Instreet Link Absolute Returns from Commodities (ARC) offers an investment solution for many market conditions. Through specialised research and development, Instreet has identified an index that has the potential to perform in bull, bear and sideways markets. For a relatively small one off up-front payment, investors have access to absolute returns from commodities, with known downside risk.*

*ARC is an investment in a Deferred Purchase Agreement (DPA).*

## **Benefits and Features**

- Potential to access Absolute Returns from Commodities in most market conditions
- One off upfront payment which is a fraction of the size of the Notional Exposure of the investment.
- Annual payment of gains:
  - Coupon payment end of year 1.
  - DPA payment end of year 2.
- The maximum loss is the one off upfront payment.



\*Please see Important Notice section.

# Link arc

## Absolute Returns from Commodities Deferred Purchase Agreement

### The Absolute Return Commodities Index

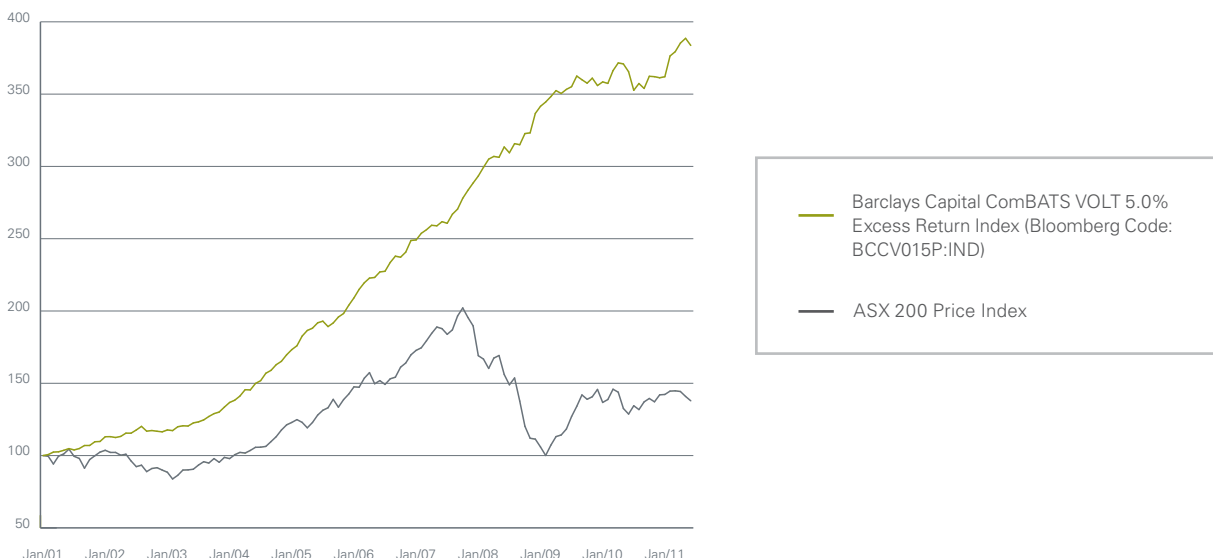
The Absolute Return Commodities Index is the Barclays Capital ComBATS VOLT 5.0% Excess Return Index (Bloomberg Code: BCCV015P:IND). This is a commodity market-neutral index linked to the performance of a quantitative exchange traded commodities strategy. Barclays Capital has developed an innovative set of rules that aims to generate consistent positive returns with low volatility, in a range of market conditions.

### An investment in the Instreet Link ARC DPA may suit you if you:

- Seek exposure to absolute returns for a cost which is a fraction of your notional exposure (eg, \$11,800 for \$100,000 exposure for 2 years).
- Intend to buy and hold for a term of 2 years.
- Want an investment with a defined outcome on the downside, where losses are limited to your initial investment.
- Are attracted by the annual payments of any gains.
- Seek an investment which can be used to diversify their investment portfolio with exposure to an asset class that can perform in many market conditions.
- Seek an investment which is suitable for self managed superannuation funds, companies, trusts or individuals.

### Performance Chart

ASX 200 Price Index comparison with Barclays Capital ComBATS VOLT 5.0% Excess Return Index



This history has been provided to enable Investors to view the simulated returns for the date specified in the chart.

Investors should note that simulated performance is not a reliable indicator of future performance. Please see Important Notice for more information.

**Instreet Investment Limited**

Level 34, 50 Bridge Street  
Sydney, NSW 2000

PO BOX R380  
Royal Exchange, NSW 1225

**E** [info@instreet.com.au](mailto:info@instreet.com.au)

**T** 1300 954 678

**W** [instreet.com.au](http://instreet.com.au)

## Example of how Instreet Link ARC may work

The tables below are examples only that are provided to illustrate how the investment strategy may perform in different market conditions. They are based on an investor initial investment of \$11,800.

Year	Index Example 1	Payment on Notional	Return on Initial Investment
0	360		
1	414	\$15,000	27%
2	476	\$15,000	127%

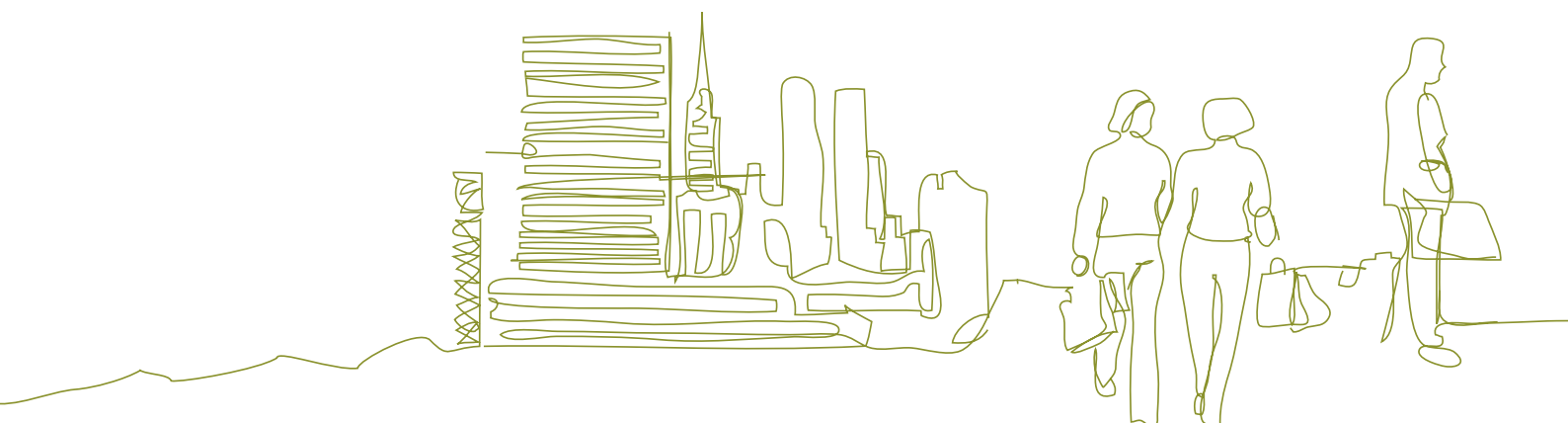
  

Year	Index Example 2	Payment on Notional	Return on Initial Investment
0	360		
1	270	\$0	0%
2	324	\$20,000	69%

Year	Index Example 3	Payment on Notional	Return on Initial Investment
0	360		
1	270	\$0	0%
2	252	\$0	-100%

Year	Index Example 4	Payment on Notional	Return on Initial Investment
0	360		
1	432	\$20,000	69%
2	414	\$0	0%



**Instreet Investment Limited**

Level 34, 50 Bridge Street  
Sydney, NSW 2000

PO BOX R380  
Royal Exchange, NSW 1225

**E** [info@instreet.com.au](mailto:info@instreet.com.au)

**T** 1300 954 678

**W** [instreet.com.au](http://instreet.com.au)

## How to apply

Before investing in the Instreet Link ARC DPA, it is important that investors read and understand the terms and investment risks set out in the Product Disclosure Statement (PDS). Please contact Instreet to obtain a copy of the PDS on **1300 954 678**, or download from Instreet's website [www.instreet.com.au](http://www.instreet.com.au).

If, after you have read the PDS, you decide to apply for Units, please complete and return the Application Form attached to the PDS. Payments can be made by EFT, cheque or you can elect to direct debit your account.

**Completed application forms can be sent to:****Instreet Investment Limited**

PO BOX R380

Royal Exchange, NSW 1225

**Important Notice**

**Document:** This Document has been prepared by Instreet Investment Limited ACN 128 813 016 (Instreet), an Authorised Representative of EA Financial, LP ACN 971 745 471, AFSL 246801, and is current as at 1 May 2011. Instreet is the Arranger for the Instreet Link Series ARC Index Linked Deferred Purchase Agreements (Instreet LINK ARC).

**Advisers only:** The information in this Document is confidential and provided to holders of an Australian financial services license or their representatives only. It must not be reproduced, distributed or disclosed to any other person. The information may be based on assumptions or market conditions and may change without notice. This may impact the accuracy of the information. In no circumstances is the information in this Document to be used by, or presented to, a person for the purposes of making a decision about a financial product or class of products.

**Issuer and PDS:** The Instreet LINK DPA ARC product is issued by Instreet Structured Investment Pty Ltd ACN 140 407 558, (ISI) and the issue is arranged by Instreet. The Instreet LINK DPA ASX 200 and Asia 50 is offered in a product disclosure statement dated on or around the 31 January 2011 (PDS). The PDS is available from Level 11, 2 Bulletin Place, Sydney, at the website [www.instreet.com.au](http://www.instreet.com.au) or by phoning 1300 954 678. In deciding whether to acquire or continue to hold and investment investors should obtain the PDS and consider its contents.

**General advice warning:** The information contained in this Document is general information only. It has been prepared without taking account any potential investors' financial situation, objectives or needs and the appropriateness of this information needs to be considered in that context. Advisers must form their own views on whether the Instreet LINK DPA ARC is appropriate after considering their clients' objectives, financial situation and needs. We recommend you seek your own legal and taxation advice.

No responsibility or liability is accepted by Instreet or any third party who has contributed to this Document for any of the information contained herein or for any action taken by you or any of your officers, employees, agents or associates.

**Past performance:** Past performance is not a reliable indicator of future performance. Returns shown in the examples are based on increases and decreases on the Barclays Capital ComBATS VOLT 5% Excess Return Index (Bloomberg Code BCCV015P:IND). Data used in the examples is for information purposes only and has not been derived from actual or simulated data. The performance uses the historical values of the Barclays Capital ComBATS VOLT 5% Excess Return Index as published by Bloomberg.

In addition, the simulation assumes that the Barclays Capital ComBATS VOLT 5% Excess Return Index was not terminated by the Index Calculation Agent and where there was a Market Disruption Event or other event which prevented the publishing of a the Index Value, the level on the following Business Day