

Link

S&P ASX 200 INDEX LINKED Deferred Purchase Agreement

INstreet

Instreet Investment Limited

Level 34, 50 Bridge Street
Sydney, NSW 2000

PO BOX R380
Royal Exchange, NSW 1225

E info@instreet.com.au

T 1300 954 678

W instreet.com.au

Access upside growth potential of the Australian stock market.

Instreet Link DPA ASX200 is an investment in a Deferred Purchase Agreement (DPA). The investment aims to provide investors with access to growth in the Australian stock market in return for a one off upfront payment. The performance of the DPA is linked to the upside performance of the Australian stock market as measured by the S&P/ASX 200 Price Return Index (S&P ASX 200 Index), subject to a specified return Cap for each Series.

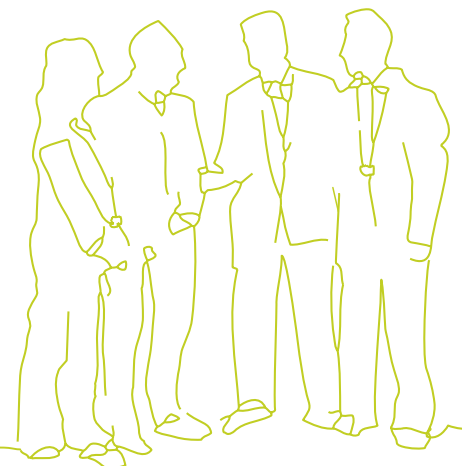
An investment in the Instreet Link S&P ASX 200 DPA may suit you if you:

- Seek exposure to the Australian stock market for a cost which is a fraction of your notional exposure (eg, \$12,100 provides \$100,000 exposure for 2 years).
- Intend to buy and hold for a maximum term of 2 years, or 3 years.
- Do not want ongoing payments.
- Want an investment with a defined outcome, on both the upside and downside, where losses are limited to your initial investment amount and gains are limited to the defined Cap level.
- Seek an investment which can be used as a portfolio rebalancing tool.
- Seek an investment which is suitable for self managed superannuation funds, companies, trusts or individuals.

There are three Series options with different Cap levels and terms:

- Indicative Cap 17%-20%¹ – 2 year term
- Indicative Cap 27%-30%² – 2 year term
- Indicative Cap 45%-50%³ – 3 year term

The actual Cap will be set on the Issue Date. It may be more or less than the indicative Cap shown.



¹ The minimum Cap for this is 17%. If the actual Cap is below 17%, the issue of Units will not proceed and your investment will be refunded without interest. The actual Cap will be set on the Issue Date of the Units. It may be more or less than the indicative Cap shown.

² The minimum Cap for this is 27%. If the actual Cap is below 27%, the issue of Units will not proceed and your investment will be refunded without interest. The actual Cap will be set on the Issue Date of the Units. It may be more or less than the indicative Cap shown.

³ The minimum Cap for this is 45%. If the actual Cap is below 45%, the issue of Units will not proceed and your investment will be refunded without interest. The actual Cap will be set on the Issue Date of the Units. It may be more or less than the indicative Cap shown.



S&P ASX 200 INDEX LINKED Deferred Purchase Agreement

Benefits and Features

The Instreet Link DPA ASX200 seek to provide you with the following potential benefits and features:

Access upside growth potential of the Australian stock market

The Instreet Link DPA ASX200 offers an investor the opportunity to access the potential upside growth of the Australian stock market subject to a Cap. This investment exposure is subject to risks, limitations and conditions, please read the product disclosure statement for further information.

One off upfront payment

The Link DPA ASX200 provides exposure to the Australian stock market for an Issue Price which is a fraction of the size of the Notional Exposure of the investment. An investor's potential financial loss is limited to their initial investment.

Simple Documentation

Investors may access by completing the Application Form attached to the PDS.

S&P ASX 200 Index Price Index

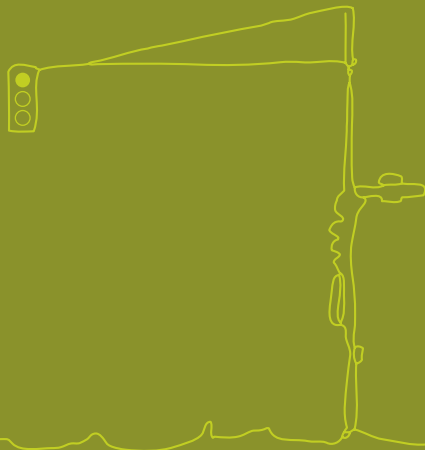
The S&P ASX 200 Index, is widely followed and is designed to be a gauge for the Australian stock market and covers approximately 78% of Australian stock market capitalisation being the top 200 ASX listed companies by market capitalisation.

The index is calculated by Standard & Poor's.

Timetable³

Investment Term	2 years or 3 years
Buy-Back Dates	Quarterly, 6 months after units are issued on the last business day of March, June, September and December. Investors must lodge their Buy-Back request no later than 10 business days before the relevant Buy-Back Date.
Minimum Underlying Exposure	\$50,000
Product Issuer	Merrill Lynch (Australia) Futures Limited
Reference Index	S&P ASX 200 Price Index

³ This timetable is indicative only. The Issuer may, in its discretion, extend or shorten the offer period without prior notice. If this happens, all dates may vary. If the Issuer varies the offer period it may post a notice on the website informing Applicants of the change at www.instreet.com.au



Instreet Investment Limited

Level 34, 50 Bridge Street
Sydney, NSW 2000

PO BOX R380
Royal Exchange, NSW 1225

E info@instreet.com.au

T 1300 954 678

W instreet.com.au

Delivery Asset

The Final Value will be satisfied by the physical delivery of the Delivery Parcel of stocks listed on the ASX. Investors may choose to enter into an agency agreement to have the Delivery Parcel sold on their behalf – in this case the investors will then receive monies with a value equivalent to the Final Value.

The Delivery Parcel is a basket containing equal proportions of ordinary shares in each of the following companies:

Company	ASX Code	Website
BHP Billiton Limited	BHP	www.bhp.com.au
Commonwealth Bank of Australia	CBA	www.commbank.com.au
Telstra Corporation Limited	TLS	www.telstra.com
Westpac Banking Corporation	WBC	www.westpac.com.au
Woolworths Limited	WOW	www.woolworths.com.au

In the event one or more of the above companies are no longer listed on the ASX or suspended from trading a replacement company from within the S&P ASX 200 Index may be selected or that the basket shall contain only the companies not impacted by such occurrence.



Instreet Investment Limited

Level 34, 50 Bridge Street
Sydney, NSW 2000

PO BOX R380
Royal Exchange, NSW 1225

E info@instreet.com.au

T 1300 954 678

W instreet.com.au

How to apply

Before investing in the Instreet Link DPA ASX200, it is important that investors read and understand the terms and investment risks set out in the Product Disclosure Statement (PDS). Please contact Instreet to obtain a copy of the PDS on **1300 954 678**, or download from Instreet's website www.instreet.com.au.

If, after you have read the PDS, you decide to apply for Units, please complete and return the Application Form attached to the PDS. Payments can be made by EFT, cheque or you can elect to direct debit your account.

Completed application forms can be sent to:**Instreet Investment Limited**

PO BOX R380

Royal Exchange, NSW 1225

INquire

Justin Byrne – NSW

E jbyrne@instreet.com.au

T 1300 954 678

M 0414 736 396

Susanne Bransgrove – QLD/WA

E sbransgrove@instreet.com.au

T 1300 954 678

M 0410 501 099

Gabriel Carey – VIC/SA/TAS

E gcarey@instreet.com.au

T 1300 954 678

M 0409 129 513

Important Information

Document: This Document has been prepared by Instreet Investment Limited ACN 128 813 016 (**Instreet**), an Authorised Representative of EA Financial, LP ACN 971 745 471, AFSL 246801, and is current as at 16 July 2009. Instreet is the distribution manager for the Instreet Link Series S&P ASX 200 Index Linked Deferred Purchase Agreements (Instreet LINK DPA ASX200).

Advisers only: The information in this Document is confidential and provided to holders of an Australian financial services license or their representatives only. It must not be reproduced, distributed or disclosed to any other person. The information may be based on assumptions or market conditions and may change without notice. This may impact the accuracy of the information. In no circumstances is the information in this Document to be used by, or presented to, a person for the purposes of making a decision about a financial product or class of products.

Issuer and PDS: The Instreet LINK DPA ASX200 product is issued by Merrill Lynch (Australia) Futures Limited ACN 003 659 674, AFSL 235143 (**MLAF**) and the issue is arranged by Merrill Lynch Equities (Australia) Limited ACN 006 276 795, AFSL 235132 (**MLEA**). The Instreet LINK DPA ASX200 is offered in a product disclosure statement dated on or around the 3 August 2009 (**PDS**). The PDS will be available from Level 34, 50 Bridge Street, Sydney, at the website www.instreet.com.au or by phoning 1300 954 678. In deciding whether to acquire or continue to hold and investment investors should obtain the PDS and consider its contents.

The information in this Document has not been prepared or reviewed by MLAF, MLEA or any of their affiliates. None of MLAF, MLEA or any of their affiliates makes any statement in this Document, nor do they make any representation or warranty, or accept any responsibility or liability, to any party in relation to any whole or part of such information.

General advice warning: The information contained in this Document is general information only. It has been prepared without taking account any potential investors' financial situation, objectives or needs and the appropriateness of this information needs to be considered in that context. Advisers must form their own views on whether the Instreet LINK DPA ASX200 is appropriate after considering their clients' objectives, financial situation and needs. We recommend you seek your own legal and taxation advice.

No responsibility or liability is accepted by Instreet or any third party who has contributed to this Document for any of the information contained herein or for any action taken by you or any of your officers, employees, agents or associates.

Past performance: Past performance is not a reliable indicator of future performance.



INstreet

Instreet Investment Limited

Level 34, 50 Bridge Street
Sydney, NSW 2000

PO BOX R380
Royal Exchange, NSW 1225

E info@instreet.com.au

T 1300 954 678

W instreet.com.au

S&P ASIA 50 INDEX LINKED Deferred Purchase Agreement

Access upside growth potential of the Asian stock markets.

Instreet Link DPA Asia 50 is an investment in a Deferred Purchase Agreement (DPA). The investment aims to provide investors with access to growth in the Asian stock markets in return for a one off upfront payment. The performance of the DPA is linked to the upside performance of the Asian stock markets as measured by the S&P Asia 50 Price Return Index (S&P Asia 50 Index), subject to a specified return Cap for the Series.

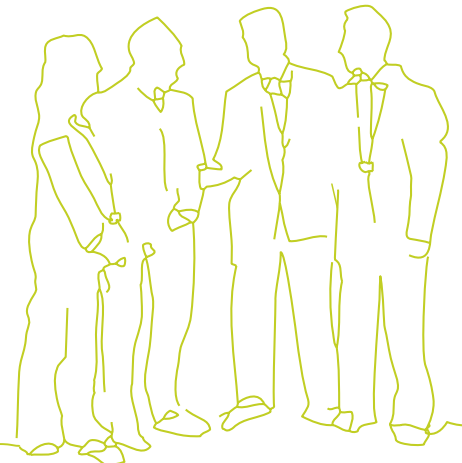
An investment in the Instreet Link S&P Asia 50 DPA may suit you if you:

- Seek exposure to the Asian stock markets of Hong Kong, South Korea, Taiwan and Singapore for a cost which is a fraction of your notional exposure (eg, \$17,500 provides \$100,000 exposure for 2 years).
- Intend to buy and hold for a maximum term of 2 years.
- Do not want ongoing payments.
- Want an investment with a defined outcome, on both the upside and downside, where losses are limited to your initial investment amount and gains are limited to the defined Cap level.
- Seek an investment which can be used as a portfolio rebalancing tool.
- Seek an investment which is suitable for self managed superannuation funds, companies, trusts or individuals.

There is one Series option:

- Indicative Cap 27%-30%¹, – 2 year term

The actual Cap will be set on the Issue Date. It may be more or less than the indicative Cap shown.



¹ The minimum Cap for this is 27%. If the actual Cap is below 27%, the issue of Units will not proceed and your investment will be refunded without interest. The actual Cap will be set on the Issue Date of the Units. It may be more or less than the indicative Cap shown.

Link

S&P ASIA 50 INDEX LINKED Deferred Purchase Agreement

Benefits and Features

The Instreet Link DPA Asia 50 seeks to provide you with the following potential benefits and features:

Access upside growth potential of the Asian stock markets

The Instreet Link DPA Asia 50 offers an investor the opportunity to access the potential upside growth of the Asian stock market subject to a Cap. This investment exposure is subject to risks, limitations and conditions, please read the product disclosure statement for further information.

One off upfront payment

The Link DPA Asia 50 provides exposure to the Asian stock market for an Issue Price which is a fraction of the size of the Notional Exposure of the investment. An investor's potential financial loss is limited to their initial investment.

Simple Documentation

Investors may access by completing the Application Form attached to the PDS.

S&P Asia 50 Index Price Index

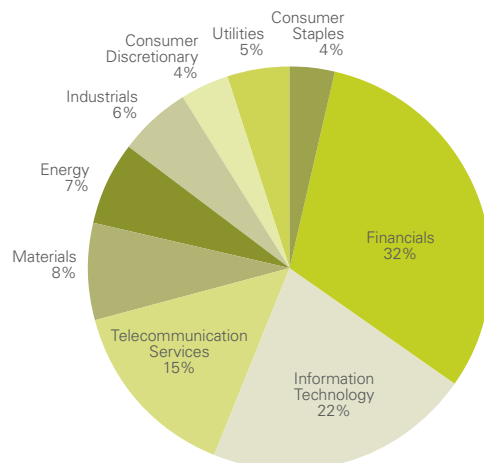
The S&P Asia 50 is an equity index drawn from four major Asian markets – Hong Kong, Korea, Singapore and Taiwan. It is designed for investors seeking broad market exposure through an index that is efficient to replicate.

The index constituents are leading, large, liquid, blue chip companies from the Asian markets. Both the weight of each country and that of the sectors reflect the weight of those respective attributes in the universe of stocks from the four countries. The underlying prices for the S&P Asia 50 are collected in local currencies and index levels are released in U.S. dollars and calculated on a real-time basis.

The S&P Asia 50 comprises securities denominated in foreign currencies. Ultimate returns will be expressed in Australian Dollars so there are no foreign exchange exposures on Units which are held to maturity. Please refer to the PDS for further information.

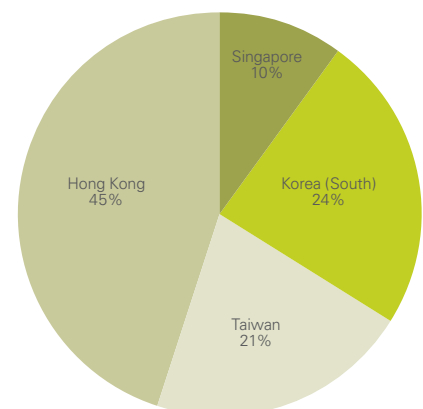
S&P Asian 50 Sector Weights

Source - Standard & Poor's December 2008



S&P Asian 50 Country Weights

Source - Standard & Poor's December 2008



² This timetable is indicative only. The Issuer may, in its discretion, extend or shorten the offer period without prior notice. If this happens, all dates may vary. If the Issuer varies the offer period it may post a notice on the website informing Applicants of the change at www.instreet.com.au

Instreet Investment Limited

Level 34, 50 Bridge Street
Sydney, NSW 2000

PO BOX R380
Royal Exchange, NSW 1225

E info@instreet.com.au

T 1300 954 678

W instreet.com.au

Timetable²

Investment Term	2 years
Buy-Back Dates	Quarterly, 6 months after units are issued on last business day of March, June, September and December. Investors must lodge their Buy-Back request no later than 10 business days before the relevant Buy-Back Date.
Minimum Underlying Exposure	\$50,000
Product Issuer	Merrill Lynch (Australia) Futures Limited
Reference Index	S&P Asia 50 Price Index

Delivery Asset

The Final Value will be satisfied by the physical delivery of the Delivery Parcel of stocks listed on the ASX. Investors may choose to enter into an agency agreement to have the Delivery Parcel sold on their behalf – in this case the investors will then receive monies with a value equivalent to the Final Value.

The Delivery Parcel is a basket containing equal proportions of ordinary shares in each of the following companies:

Company	ASX Code	Website
BHP Billiton Limited	BHP	www.bhp.com.au
Commonwealth Bank of Australia	CBA	www.commbank.com.au
Telstra Corporation Limited	TLS	www.telstra.com
Westpac Banking Corporation	WBC	www.westpac.com.au
Woolworths Limited	WOW	www.woolworths.com.au

In the event one or more of the above companies are no longer listed on the ASX or suspended from trading a replacement company from within the S&P ASX 200 Index may be selected or that the basket shall contain only the companies not impacted by such occurrence.



Instreet Investment Limited

Level 34, 50 Bridge Street
Sydney, NSW 2000

PO BOX R380
Royal Exchange, NSW 1225

E info@instreet.com.au

T 1300 954 678

W instreet.com.au

How to apply

Before investing in the Instreet Link DPA Asia 50, it is important that investors read and understand the terms and investment risks set out in the Product Disclosure Statement (PDS). Please contact Instreet to obtain a copy of the PDS on **1300 954 678**, or download from Instreet's website www.instreet.com.au.

If, after you have read the PDS, you decide to apply for Units, please complete and return the Application Form attached to the PDS. Payments can be made by EFT, cheque or you can elect to direct debit your account.

Completed application forms can be sent to:**Instreet Investment Limited**

PO BOX R380

Royal Exchange, NSW 1225

INquire

Justin Byrne – NSW

E jbyrne@instreet.com.au

T 1300 954 678

M 0414 736 396

Susanne Bransgrove – QLD/WA

E sbransgrove@instreet.com.au

T 1300 954 678

M 0410 501 099

Gabriel Carey – VIC/SA/TAS

E gcarey@instreet.com.au

T 1300 954 678

M 0409 129 513

Important Information

Document: This Document has been prepared by Instreet Investment Limited ACN 128 813 016 (**Instreet**), an Authorised Representative of EA Financial, LP ACN 971 745 471, AFSL 246801, and is current as at 16 July 2009. Instreet is the distribution manager for the Instreet Link Series S&P Asia 50 Index Linked Deferred Purchase Agreements (Instreet LINK DPA Asia 50).

Advisers only: The information in this Document is confidential and provided to holders of an Australian financial services license or their representatives only. It must not be reproduced, distributed or disclosed to any other person. The information may be based on assumptions or market conditions and may change without notice. This may impact the accuracy of the information. In no circumstances is the information in this Document to be used by, or presented to, a person for the purposes of making a decision about a financial product or class of products.

Issuer and PDS: The Instreet LINK DPA Asia 50 product is issued by Merrill Lynch (Australia) Futures Limited ACN 003 659 674, AFSL 235143 (**MLAF**) and the issue is arranged by Merrill Lynch Equities (Australia) Limited ACN 006 276 795, AFSL 235132 (**MLEA**). The Instreet LINK DPA ASX200 is offered in a product disclosure statement dated on or around the 3 August 2009 (**PDS**). The PDS will be available from Level 34, 50 Bridge Street, Sydney, at the website www.instreet.com.au or by phoning 1300 954 678. In deciding whether to acquire or continue to hold and investment investors should obtain the PDS and consider its contents.

The information in this Document has not been prepared or reviewed by MLAF, MLEA or any of their affiliates. None of MLAF, MLEA or any of their affiliates makes any statement in this Document, nor do they make any representation or warranty, or accept any responsibility or liability, to any party in relation to any whole or part of such information.

General advice warning: The information contained in this Document is general information only. It has been prepared without taking account any potential investors' financial situation, objectives or needs and the appropriateness of this information needs to be considered in that context. Advisers must form their own views on whether the Instreet LINK DPA Asia 50 is appropriate after considering their clients' objectives, financial situation and needs. We recommend you seek your own legal and taxation advice.

No responsibility or liability is accepted by Instreet or any third party who has contributed to this Document for any of the information contained herein or for any action taken by you or any of your officers, employees, agents or associates.

Past performance: Past performance is not a reliable indicator of future performance.