

Mast

Instreet Mast S&P/ASX 200

INstreet

Instreet Investment Limited

Level 34, 50 Bridge Street
Sydney, NSW 2000

PO BOX R380
Royal Exchange, NSW 1225

E info@instreet.com.au

T 1300 954 678

W instreet.com.au

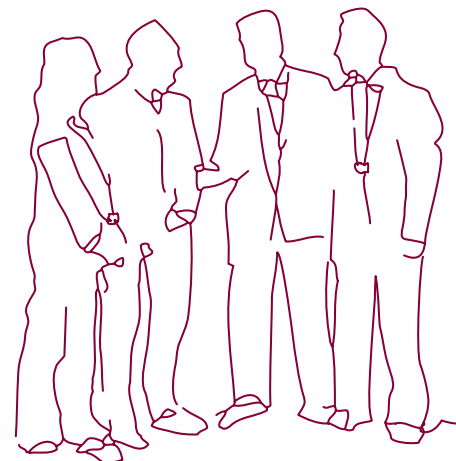
An investment in the Australian share market that works for you.

Instreet Mast S&P/ASX 200 provides you with a flexible investment solution that allows you to access the growth potential of the Australian share market.

Instreet Mast S&P/ASX 200 provides the potential to benefit from uncapped gains on the Australian share market (as measured by the S&P/ASX 200) over a 3-year period with the potential for annual coupons.

An investment in Instreet Mast S&P/ASX 200 may suit you if you are seeking:

- **Geared exposure to the Australian share market:** benefit from the potential growth of the share market with minimal upfront capital required.
- **Limited recourse loan:** fund your investment with a compulsory 100% limited recourse loan which is not subject to any personal credit enquiries.
- **Competitive interest rate:** 8.25% per annum (fixed for the term).
- **Uncapped returns:** so you can benefit fully* if the market rallies significantly over the investment term.
- **Walk-away feature:** if the share market performance doesn't meet your objectives you have the ability to walk-away from the investment with no penalties and nothing further to pay on the loan at any stage (or annually).
- **Volatility management:** Instreet Mast S&P/ASX200 will help to smooth your returns by automatically reducing your share market exposure when volatility is high, and increasing your market exposure, up to 150% participation rate, when volatility is low (without your investment ever becoming cash-locked).
- **Fixed coupon:** of 4% p.a. in years 1 and 2.



*Subject to the participation rate.

Mast

Instreet Mast S&P/ASX 200

Benefits and Features

Instreet Mast S&P/ASX200 seeks to provide you with the following potential benefits and features:

An investment that works for you and your SMSF

- Exposure to the growth potential of the S&P/ASX 200 Price Return Index
- Share market exposure that varies between 0%-150% depending on market volatility
- Ability to 'walk-away' annually without penalties or any further interest to pay
- Competitive interest rate of 8.25% p.a, which is fixed for the life of the loan
- Simple application process
- Fixed annual coupon of 4% in years 1 and 2.
- Uncapped returns at maturity
- No margin calls
- Limited recourse which means that the lender's recourse is limited to your units in Instreet Mast S&P/ASX200
- No cash locking
- SMSF friendly

Recent share market volatility has shown the impact that gearing can have on a share market investment. This is because gearing

Volatility management and gearing

can magnify losses as well as gains. With this in mind, volatility management may be an appropriate strategy to help you smooth out share market returns.

Instreet Mast S&P/ASX200 offers you the peace of mind of volatility management as it works to ensure that when share market volatility is high, your exposure to the share market is reduced. Conversely when volatility is low, your exposure to the share market is increased. The following graph shows the performance of the S&P/ASX 200 Price Index alongside the performance of the same index utilising volatility management. It also shows the participation rate.





Instreet Investment Limited

Level 34, 50 Bridge Street
Sydney, NSW 2000

PO BOX R380
Royal Exchange, NSW 1225

E info@instreet.com.au

T 1300 954 678

W instreet.com.au

How to apply

Before investing in Instreet Mast S&P/ASX200, it is important that investors read and understand the terms and investment risks set out in the PDS. Please contact Instreet to obtain a copy of the PDS on **1300 954 678** or download from Instreet's website www.instreet.com.au.

If, after you have read the PDS, you decide to apply for Units, please complete and return the Application Form attached to the PDS. Payments can be made by cheque or you can elect to direct debit your account.

Send your completed application form to:

Instreet Investment Limited

PO BOX R380

Royal Exchange, NSW 1225



Contact Instreet

E info@instreet.com.au

T 1300 954 678

Important information

Document: This Document has been prepared by Instreet Investment Limited ACN 128 813 016 (Instreet), an Authorised Representative of EA Financial, LP ABN 16 971 745 471, AFSL 246801, and is current as at 1 August 2011. Instreet is the Arranger for the Instreet Mast S&P/ASX 200 Series (Instreet Mast).

Issuer and PDS: The Instreet Mast product is issued by Instreet Structured Investment Pty Ltd ACN 140 407 558 and the issue is arranged by Instreet Investment Limited. Instreet Mast is offered in a product disclosure statement dated on or around the 1 August 2011 (PDS). The PDS will be available from Level 34, 50 Bridge Street, Sydney, at the website www.instreet.com.au or by phoning 1300 954 678. In deciding whether to acquire or continue to hold an investment investors must obtain the PDS and carefully consider its contents.

General advice warning: The information contained in this Document is general information only. It has been prepared without taking account any potential investors' financial situation, objectives or needs and the appropriateness of this information needs to be considered in that context. Advisers must form their own views on whether Instreet Mast is appropriate after considering their clients' objectives, financial situation and needs. We recommend you seek your own legal and taxation advice.

The information may be based on assumptions or market conditions and may change without notice. This may impact the accuracy of the information. In no circumstances is the information in this Document to be used by, or presented to, a person for the purposes of making a decision about a financial product or class of products.

This case study is a hypothetical example only and is not a forecast. Due care and attention has been used in the preparation of the hypothetical example. However, actual results may and will vary and any variation may be materially positive or negative.

No responsibility or liability is accepted by Instreet or any third party who has contributed to this Document for any of the information contained herein or for any action taken by you or any of your officers, employees, agents or associates.

Past performance: Past performance is not a reliable indicator of future performance.
